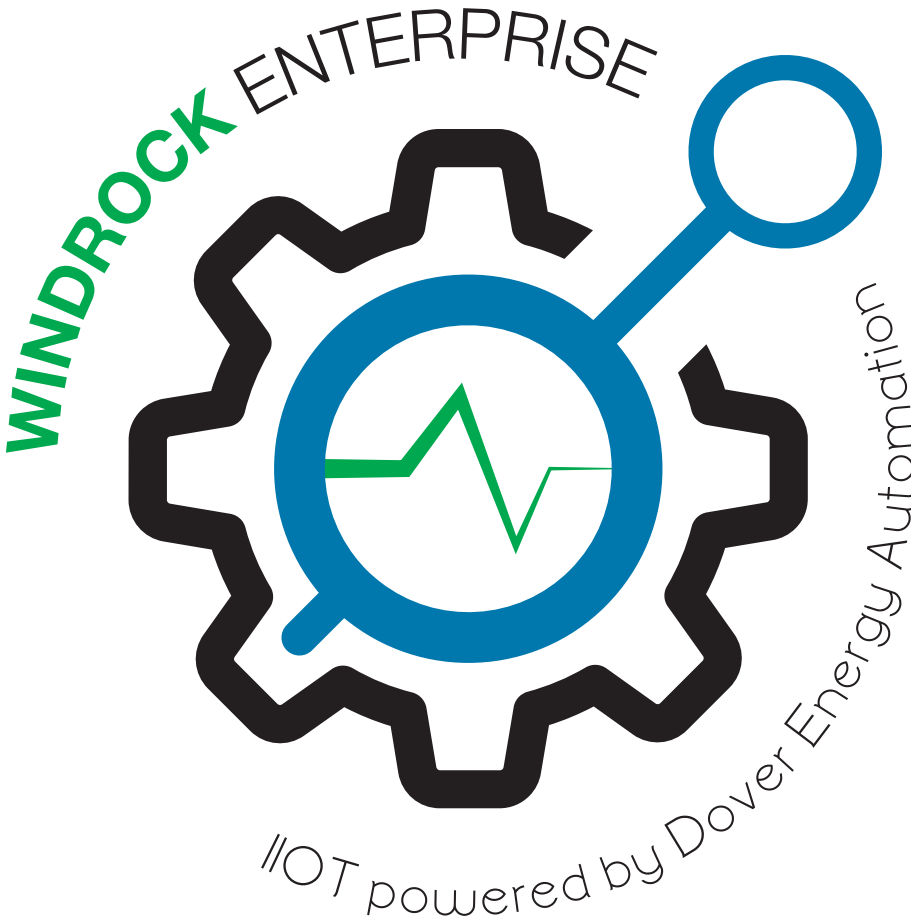


# WINDROCK ENTERPRISE

IIOT powered by Dover Energy Automation



Machine Protection



Condition Monitoring



Performance Analysis



Economic Evaluation



Visibility



Safety



Profitability



# THE NEXT INDUSTRIAL REVOLUTION IS HERE.

**WITH WINDROCK ENTERPRISE, YOU NOW HAVE THE ABILITY TO PROACTIVELY AVOID CATASTROPHIC SCENARIOS, CUT COSTS, MAXIMIZE SAFETY, INCREASE PERFORMANCE OVERSIGHT, ENHANCE FLEXIBILITY AND IMPROVE RESPONSIVENESS.**

For many plants and midstream operations, the scale and complexity of optimizing their operation is daunting. A massive amount of data is available, but making sense of it at an enterprise level was impractical until now.

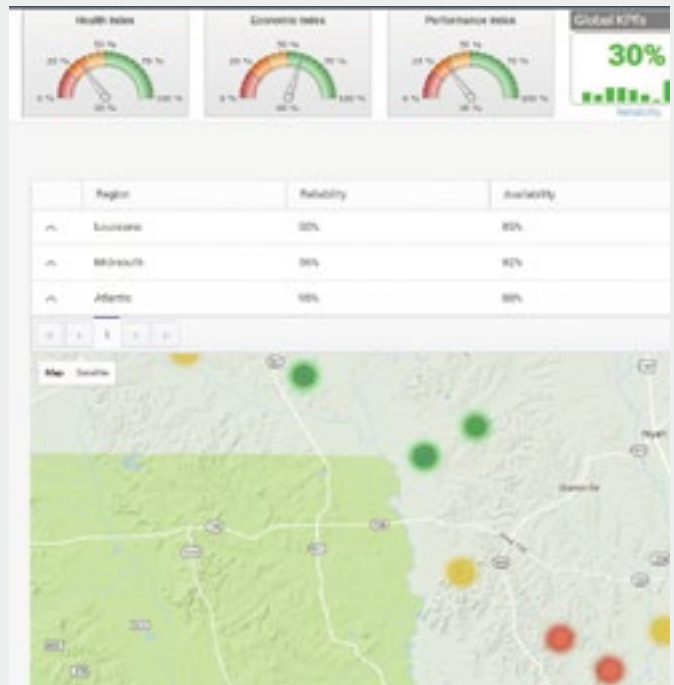
It is crucial for metrics-based decision making to replace outdated methods of managing equipment performance and maintenance. Real-time inputs are unseating periodic reports and routine schedules. The potential rewards in productivity, cost savings and risk management are limitless.

The solution? Windrock Enterprise.

**An Intelligent, Customer-Centric Ecosystem**

Windrock Enterprise is a next-generation IIoT solution. It provides an intuitive infrastructure that presents actionable insights and asset-behavior predictions so your team can optimize output, minimize risk and reduce unplanned downtime.

*\*Windrock Enterprise encompasses not only rotating equipment, but most other mechanical assets at your compressor station or plant site*



## THE ABILITY TO MONITOR WHAT MATTERS

Using Key Performance Indicators (KPI) sourced from operational insights across your company, Windrock Enterprise gives a clear, concise, near real-time picture of your entire fleet of assets. For a deeper understanding of a specific KPI, convenient navigation features allow easy access to underlying details.

Windrock Enterprise enables you to focus decision making according to your priorities and proactively address assets that are trending toward anomalous behavior.

### Why Your Asset Fleet Needs Windrock Enterprise

#### VISIBILITY OF OPERATIONAL ASSETS

Get a birds-eye view of all your equipment information in an intuitive, easy-to-read portal. Assessing the health of your entire fleet has never been easier.

#### METRICS-BASED DECISION MAKING

Clearly defined operational KPIs - available any time, anywhere - allow you to understand the current status of each asset.

#### INCREASED INSIGHT & COLLABORATION

Streamline the flow of key information to subject matter experts.

# KEY CAPABILITIES



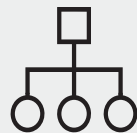
## PERFORMANCE DEFINITION & MEASUREMENT

Metrics like Health, Economic and Performance indices are routinely refreshed to reflect operational accuracy. The ability to customize or import specific elements of calculations allows greater flexibility in defining KPIs.



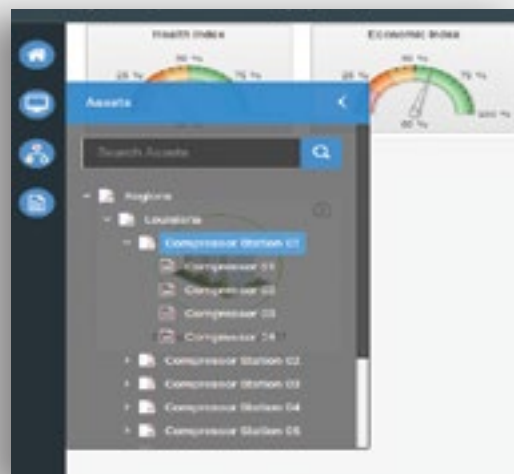
## STATION/AREA LEVEL METRICS

Color-coded visual elements bring focus to stations or areas that may warrant attention.



## ENTERPRISE-WIDE ASSET HIERARCHY

Model Windrock Enterprise to reflect your organization. Search and navigate your assets with ease.



Region	Status	Name	Engine Load	HP	HP	Status	Availability
Location	Compressor Station 01	Compressor 01	85%	4500	7000	Good	95%
Location	Compressor Station 01	Compressor 02	85%	140	1500	Good	95%
Location	Compressor Station 01	Compressor 03	75%	2750	3000	Good	95%
Location	Compressor Station 01	Compressor 04	5%	-1270	2000	Offline	85%
Location	Compressor Station 02	Compressor 01	85%	140	1500	Good	95%
Location	Compressor Station 02	Compressor 02	75%	1400	40	Good	95%
Location	Compressor Station 02	Compressor 03	85%	220	400	Warning	85%
Location	Compressor Station 02	Compressor 04	35%	50	200	Severe	25%
Location	Compressor Station 02	Compressor 05	85%	140	2200	Severe	85%
Location	Compressor Station 02	Compressor 06	75%	2000	4000	Good	95%
Location	Compressor Station 04	Compressor 01	85%	1000	1100	Severe	95%



### PERSONALIZED INFORMATION

Establish role-based access to asset information and quickly group and sort values to gather insights. Change roles to view from different perspectives.



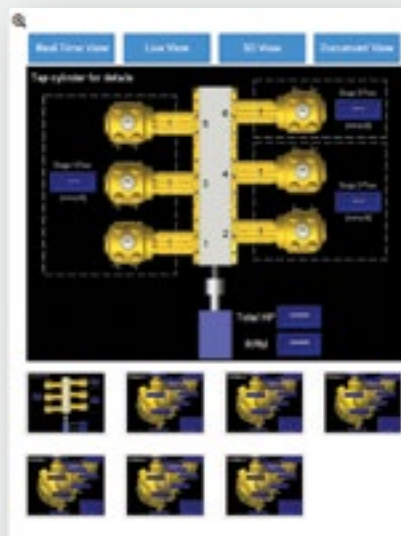
### ASSET DETAILS

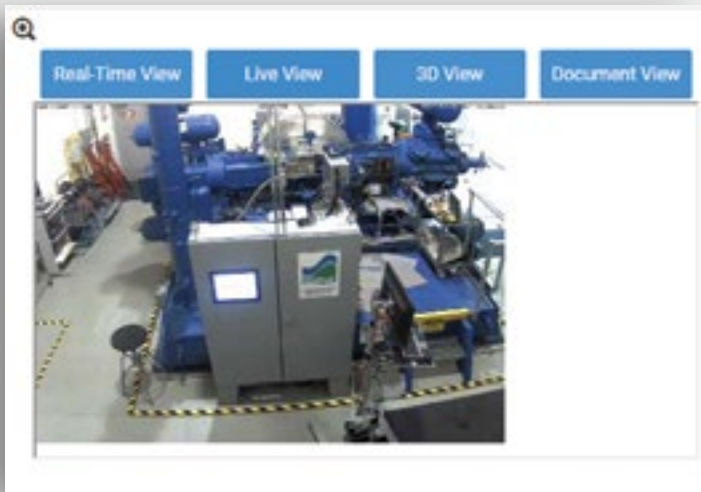
Analyze equipment attributes, trend variables and view alerts from a single pane.



### REAL-TIME ASSET DETAIL

Get instant updates of an asset's current performance and condition.





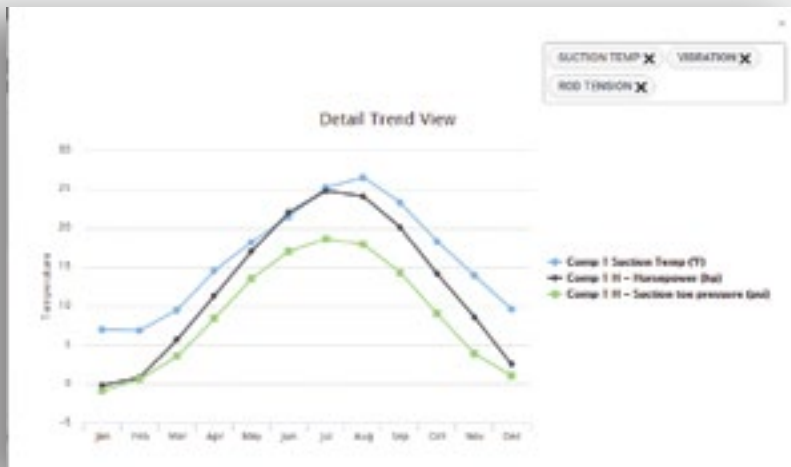
### LIVE VIDEO FEED

View live video from the asset location.



### ON-DEMAND ASSET DOCUMENTATION

Have ready access to installation or troubleshooting documents.



### WORK SEAMLESSLY WITH WINDROCK PLATINUM

Launch Windrock Platinum for deeper asset analysis.

# NOW ANYONE CAN VISUALIZE ALL ASSETS AT ANY TIME, FROM ANY PLACE

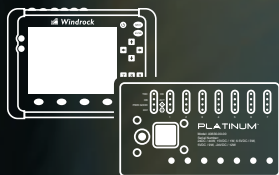
Imagine the benefits of on-demand, remote visibility for your entire fleet of assets. You could survey overall equipment health at a glance. Assess priorities promptly. And drill deep into equipment details when you need to.

With Windrock Enterprise, that time has come.

Windrock Enterprise harnesses advanced monitoring technology and in-depth condition information like never before, enabling you to improve safety, increase reliability and make more informed, cost-effective maintenance decisions.

Integrating into Windrock Enterprise provides frictionless connectivity and the security of the Microsoft® Azure® cloud-based IIoT platform – assuring each member of your team stays in touch from any device, anywhere in the world.

## MONITORING + GLOBAL CONNECTIVITY

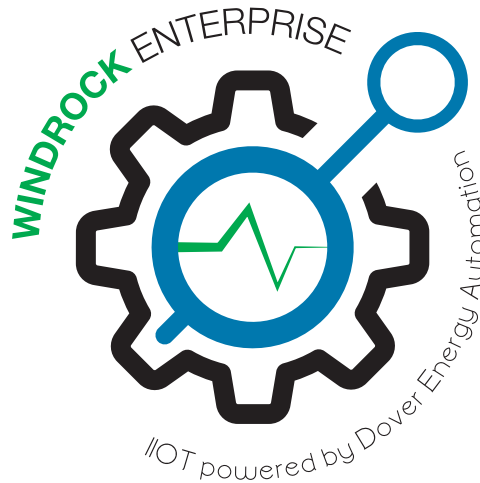


# A TEAM DEDICATED TO INCREASING YOUR MACHINERY UPTIME



**WINDROCK ENTERPRISE IS A NEXT-GENERATION IIOT PLATFORM THAT WILL TRANSFORM THE WAY YOU TRACK AND MANAGE MACHINERY ASSETS BY PROVIDING REAL-TIME CONNECTIVITY, ACTIONABLE INSIGHTS AND PREDICTIVE ADVISORIES ACROSS YOUR ENTIRE OPERATION.**

Windrock Enterprise is a collaboration of Windrock – experts in condition-based and performance-based monitoring solutions for compressors and engines – and Dover Energy Automation – leaders in products, intelligent productivity tools and related automation software for the Energy sector.



For technology solutions you need to optimize output, minimize risk and maximize uptime, contact us today.

865-330-1100 | [www.windrock.com](http://www.windrock.com) | [sales@windrock.com](mailto:sales@windrock.com)